



# #LiveMoreByTheSeashore

*Godrej* | PROPERTIES

Actual photograph from site. The views may vary basis the actual unit selected. We do not represent or warrant the continuance of any views for any period of time after the date of publication of this document, or on any new development, redevelopment, or infrastructure in the vicinity resulting into any change in the views.



A Legacy of  
*127 years*

The rich heritage of the Godrej Group's innovation and excellence is something that we proudly bring to the real estate sector. Thus combining 127 years of trust with advanced design and technology.



Artist's impression. For representation purpose only.



# Unmatched *Excellence*

For 127 years, we have been building more than homes.  
We are creating spaces filled with integrity, quality, and innovation.  
Our buildings are designed to connect diverse communities and make room for a greener, brighter future, where everyone can thrive joyfully.

35

YEARS OF  
EXPERIENCE

110+

PROJECTS

400+

AWARDS AND  
RECOGNITIONS

11+

CITIES

**AHMEDABAD**  
2.17 mn sq. mt. / 1 project

**MUMBAI**  
4.53 mn sq. mt. / 29 projects

**PUNE**  
4.74 mn sq. mt. / 16 projects

**BENGALURU**  
3.10 mn sq. mt. / 17 projects

**KOCHI**  
0.20 mn sq. mt. / 1 project

**HYDERABAD**  
0.48 mn sq. mt. / 2 projects

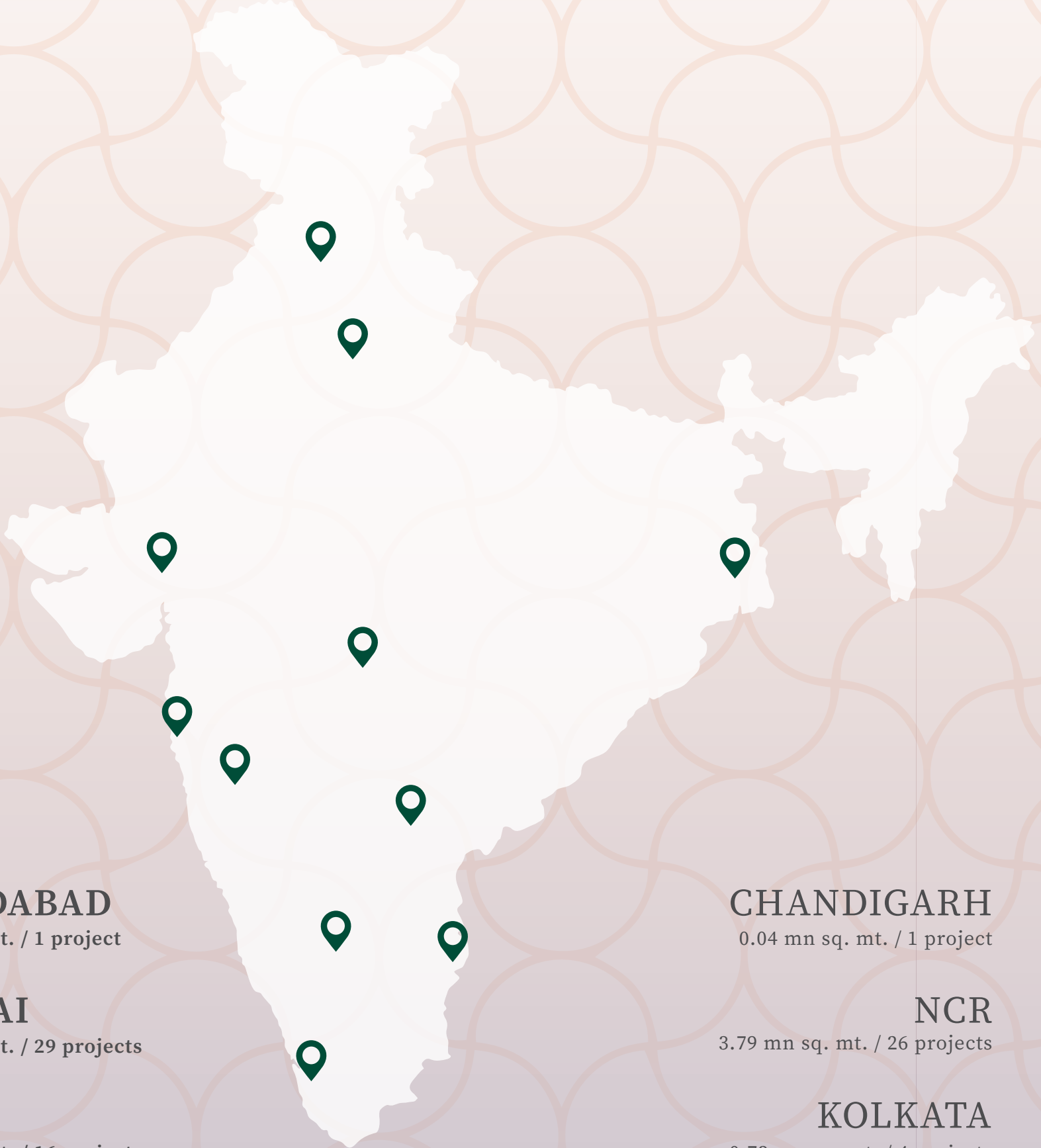
**CHANDIGARH**  
0.04 mn sq. mt. / 1 project

**NCR**  
3.79 mn sq. mt. / 26 projects

**KOLKATA**  
0.73 mn sq. mt. / 4 projects

**NAGPUR**  
0.37 mn sq. mt. / 2 projects

**CHENNAI**  
0.46 mn sq. mt. / 3 projects



Map not to scale. \*Source: Brand Trust Report, 2019 | Conversion: 10.7639 Sq. Ft. = 1 Sq. Mtr.



Transforming vision into

Reality

Our developments go beyond aesthetics to offer immersive experiences. Every line, curve, and detail is thoughtfully designed to blend seamlessly with the surroundings, turning each structure into a timeless work of art.



GODREJ HORIZON  
DADAR-WADALA



GODREJ SKY TERRACES  
CHEMBUR



GODREJ RESERVE  
KANDIVALI



GODREJ AVENUE ELEVEN  
MAHALAXMI



GODREJ RKS  
CHEMBUR



GODREJ FIVE GARDENS  
MATUNGA



The Project is registered under Godrej Horizon Phase I, MahaRERA No. P51900034851, Godrej Horizon Phase II, MahaRERA No. P51900049757, Godrej Horizon Phase III, MahaRERA No. P51900078358, Godrej RKS, MahaRERA No. P51800023915, Godrej Reserve Wing 1, MahaRERA No. P51800054703, Godrej Reserve Wing 3, MahaRERA No. P51800055694, Godrej Reserve Wing 4, MahaRERA No. P51800054691, Godrej Reserve Wing 5, MahaRERA No. P51800054690, One Mahalaxmi Phase 1, MahaRERA No. P51900005216, One Mahalaxmi Phase 2, MahaRERA No. P51900006299, Godrej Sky Terraces, MahaRERA No. P51800053882, Godrej Five Gardens, MahaRERA No. P51900048424. All available on MAHARERA website (<https://maharera.mahaonline.gov.in>).



Unrivaled vistas, ultimate luxury  
experience the *Extraordinary*

Actual photograph from site. The views may vary basis the actual unit selected. We do not represent or warrant the continuance of any views for any period of time after the date of publication of this document, or on any new development, redevelopment, or infrastructure in the vicinity resulting into any kind of impact on the views.



Elegance soars in Vashi,  
where nature meets *Exclusivity*





Crafted for the connoisseurs of  
fine living in *Vashi*



Actual photograph from site. The views may vary basis the actual unit selected. We do not represent or warrant the continuance of any views for any period of time after the date of publication of this document, or on any new development, redevelopment, or infrastructure in the vicinity resulting into any kind of impact on the views.



The city comes to  
your *Doorstep*

Enjoy seamless connectivity with direct access to Palm Beach Road, Vashi Flyover, Thane-Belapur Road, and Mumbai-Pune Expressway for effortless travel across Mumbai and beyond.







Seamless connectivity,  
elevated *Living*

With the upcoming Navi Mumbai International Airport\*  
just a short drive away, connectivity will soar,  
driving economic growth and attracting new opportunities.



Stock image for representation purpose only.

\*Adani NAVI MUMBAI INTERNATIONAL AIRPORT, <https://www.nmiairport.co.in/>

Disclaimer: The sources mentioned for the above upcoming infrastructure were obtained on 10<sup>th</sup> January, 2025 from the relevant official government sources. The infrastructure facilities mentioned are proposed to be developed by the Government and other authorities and we cannot predict the timing or the actual provisioning of these facilities, as the same is beyond our control. We shall not be responsible or liable for any delay or non-provisioning of the same.



Take the bridge to  
endless *Possibilities*

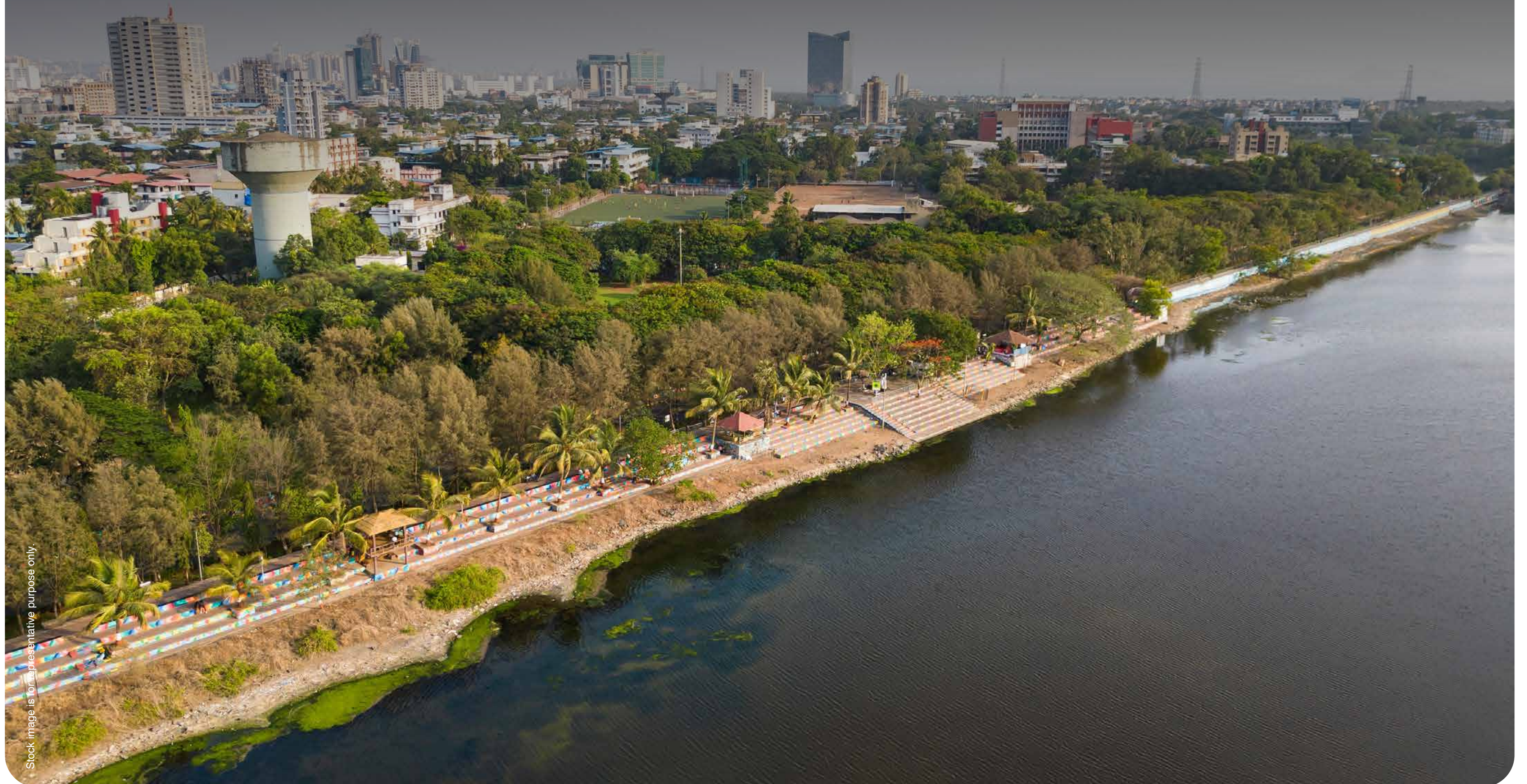
The widening of Vashi Bridge, along with the existing Atal Setu, is significantly reducing travel time to Southern & Central suburbs of Mumbai.



Experience the eminence of

*Vashi*

Unmatched connectivity to major hubs like South Mumbai, BKC, and Navi Mumbai International Airport. Proximity to premium schools, hospitals, and shopping centers ensures convenience like never before.





Vashi's one of the most  
prestigious *Address*

Nestled in the heart of Vashi, offering unparalleled connectivity and exclusivity. A location that's as coveted as the lifestyle it promises.



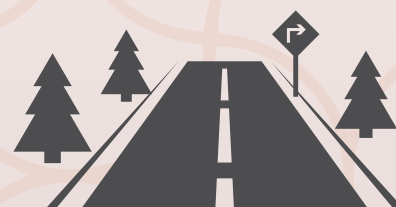
SION PANVEL HIGHWAY  
(VASHI BRIDGE)  
4 MINS\*



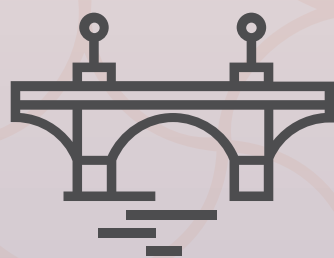
PALM BEACH ROAD  
6 MINS\*



VASHI STATION  
5 MINS\*



GHATKOPAR MANKHURD  
LINK ROAD  
12 MINS\*



EASTERN FREEWAY  
19 MINS\*



UPCOMING NAVI MUMBAI  
INTERNATIONAL AIRPORT<sup>1</sup>  
35 MINS\*



ATAL SETU (MTHL)  
38 MINS\*

The infrastructure facilities mentioned are proposed to be developed by the Government and other authorities and we cannot predict the timing or the actual provisioning of these facilities, as the same is beyond our control. We shall not be responsible or liable for any delay or non-provisioning of the same. The sources mentioned for the above upcoming infrastructure were obtained on 10th January, 2025 from the relevant official government sources. \*The time mentioned refers to drive time. Drive time is the approximate drive duration as per Google Maps recorded on 10th January 2025 at 6 am. on a four wheeler.  
<sup>1</sup>Adani NAVI MUMBAI INTERNATIONAL AIRPORT, <https://www.nmairport.co.in/>Source: Google Maps. Map not to scale.



# The address for excellence in *Education*

Father Agnel Multipurpose  
School & Jr College  
2 mins\*

Goldcrest High School  
7 mins\*

Reliance Foundation School  
8 mins\*

Avalon Heights International School  
7 mins\*

St Lawrence High School  
4 mins\*

Father Conceicao Rodrigues Institute  
of Management Studies and Engineering  
2 mins\*

Sacred Heart School  
3 mins\*

Orchids The International School  
8 mins\*

St Mary's School  
1 min\*

Source: Google Maps.  
\*The time mentioned refers to drive time. Drive time is the approximate drive duration as per Google Maps recorded on 10th January 2025 at 6 am, on a four wheeler.



# World-class *Healthcare*, just minutes away

MGM New Bombay Hospital  
3 mins\*

Fortis Hiranandani Hospital  
3 mins\*

Cloudnine Hospital  
7 mins\*

Kokilaben Dhirubhai Hospital  
10 mins\*

Source: Google Maps.

\*The time mentioned refers to drive time. Drive time is the approximate drive duration as per Google Maps recorded on 10th January 2025 at 6 am. on a four wheeler.

Stock image is for representative purpose only.



A Hub for shopping, dining, and  
seamless *Conveniences*

Inorbit Mall  
5 mins\*

Palm Beach  
Galleria - Mall  
7 mins\*

Satra Plaza  
6 mins\*

Reliance Fresh  
8 mins\*

D Mart  
7 mins\*

Reliance Smart  
Bazaar  
5 mins\*

IKEA  
10 mins\*



Source: Google Maps.  
\*The time mentioned refers to drive time. Drive time is the approximate drive duration as per Google Maps recorded on 10th January 2025 at 6 am, on a four wheeler.



Where vibrant experiences meet  
expansive *open spaces*

Mini Sea Shore  
2 mins

Sagar Vihar  
3 mins

Sunset Flamingo Point  
4 mins

Source: Google Maps. \*The time mentioned refers to drive time. Drive time is the approximate drive duration as per Google Maps recorded on 10th January 2025 at 6 am, on a four wheeler.

Actual photograph from site. The views may vary basis the actual unit selected. We do not represent or warrant the continuance of any views for any period of time after the date of publication of this document, or on any new development, redevelopment, or infrastructure in the vicinity resulting into any kind of impact on the views.



# A Hub for Businesses, Networking, and Seamless *Opportunities*

Dhirubhai Ambani  
Knowledge City  
10 min\*

Reliance Corporate  
Park  
12 min\*

Mindspace Business  
Park, Airoli  
20 min\*

BKC  
35 min

Source: Google Maps.

\*The time mentioned refers to drive time. Drive time is the approximate drive duration as per Google Maps recorded on 10th January 2025 at 6 am, on a four wheeler.

Stock image is for representative purpose only.



Experience premier *Sports*  
facilities just steps away



NAVI MUMBAI  
SPORTS ASSOCIATION  
3 MINS\*

FATHER AGNEL  
SPORTS CENTER  
2 MINS\*

NMMC SPORTS COMPLEX  
5 MINS\*

D. Y. PATIL STADIUM  
14 MINS\*



Source: Google Maps.

\*The time mentioned refers to drive time. Drive time is the approximate drive duration as per Google Maps recorded on 10th January 2025 at 6 am. on a four wheeler.

Stock image is for representative purpose only.



Amenities that redefine everyday living  
into the *Extraordinary*





Step into a lifestyle of  
exceptional *Luxury*



Artist impression, not an actual site image. No warranty is expressly or impliedly given that the completed development will comply in any degree with such artist's impression as depicted. The furniture, accessories, paintings, plantations, landscaping, items, electronic goods, additional fittings/fixtures, decorative items, false ceiling including finishing materials, specifications, shades, sizes and colour of the tiles, etc. shown in the image are only indicative in nature and are only for the purpose of illustrating/indicating a conceived layout and do not form part of the standard specifications/amenities/services to be provided in the unit and/or the Project. The specifications/amenities mentioned in the Agreement for sale and/or uploaded on RERA website shall be final and binding on the Developer and Purchaser.



Experience the zenith of  
spacious *Living*

Artist impression, not an actual site image. No warranty is expressly or impliedly given that the completed development will comply in any degree with such artist's impression as depicted. The furniture, accessories, paintings, plantations, landscaping, items, electronic goods, additional fittings/fixtures, decorative items, false ceiling including finishing materials, specifications, shades, sizes and colour of the tiles, etc. shown in the image are only indicative in nature and are only for the purpose of illustrating/indicating a conceived layout and do not form part of the standard specifications/amenities/services to be provided in the unit and/or the Project. The specifications/amenities mentioned in the Agreement for sale and/or uploaded on RERA website shall be final and binding on the Developer and Purchaser.



Immerse yourself in a world  
where every detail reflects

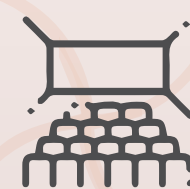
*Sophistication*



Indoor  
Badminton Court  
(Double Height)



Squash  
Court



Multipurpose  
Hall



Gaming  
Zone



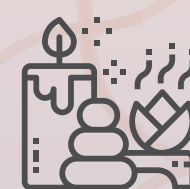
Kids' Play  
Area



Glass House  
Café



Swimming  
Pool



Spa



Space For  
Crèche



Library



Sky  
Yoga



Sky  
Lounge



Star Gazing  
Deck



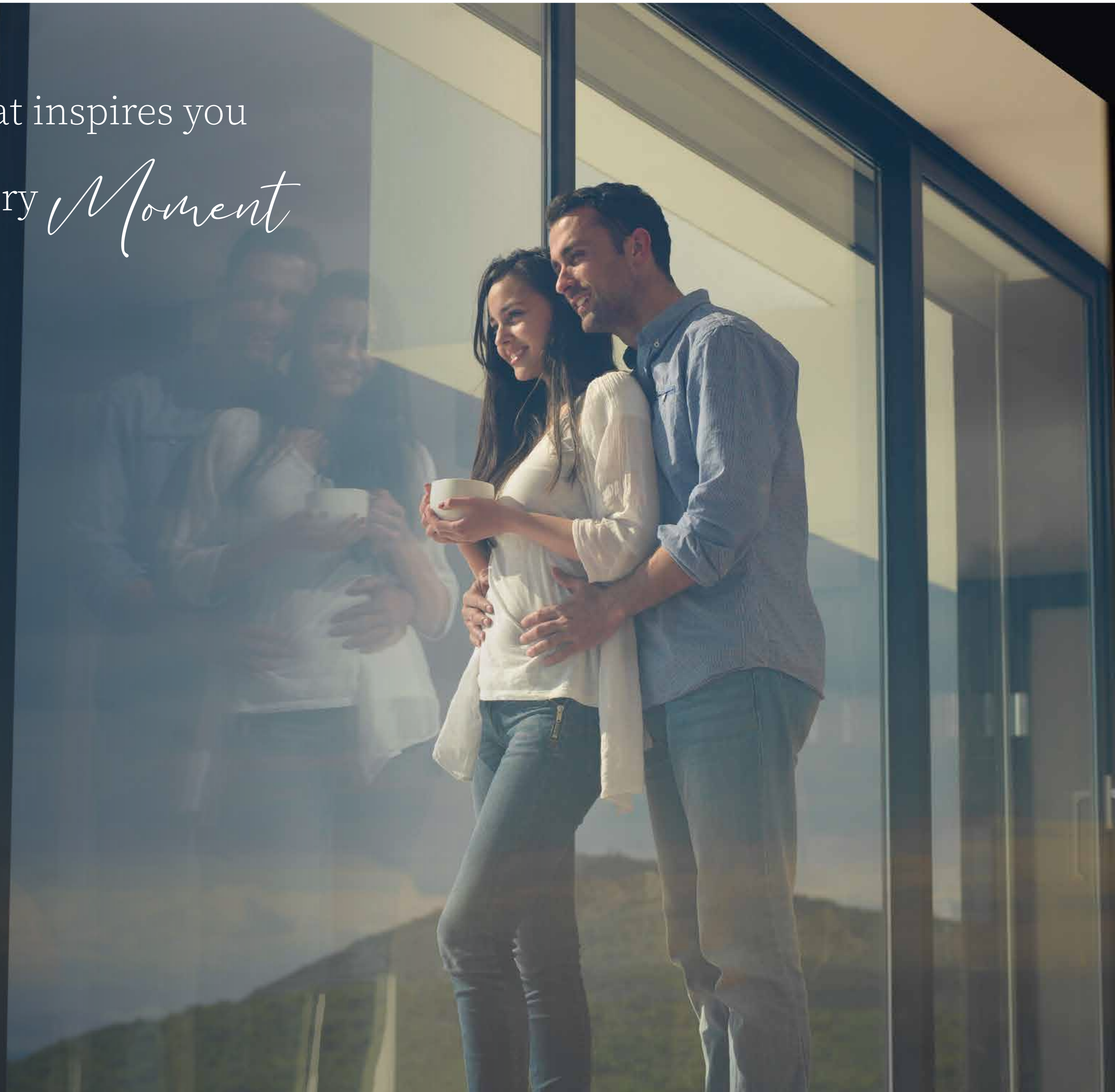
Sky  
Lawn



Barbeque  
Area



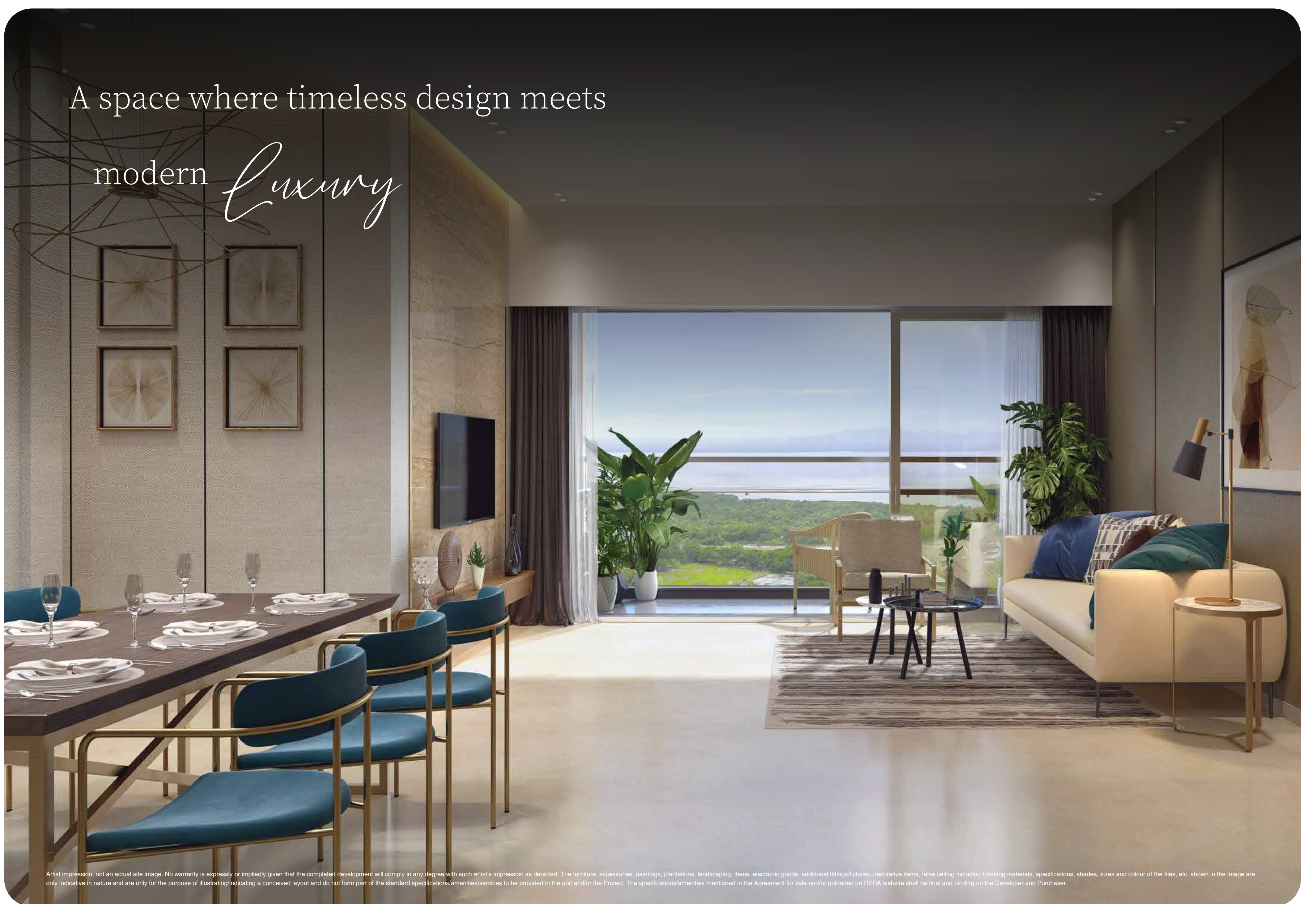
Rediscover what inspires you  
and elevate every *Moment*





A space where timeless design meets

modern *Luxury*



Artist impression, not an actual site image. No warranty is expressly or impliedly given that the completed development will comply in any degree with such artist's impression as depicted. The furniture, accessories, paintings, plantations, landscaping, items, electronic goods, additional fittings/fixtures, decorative items, false ceiling including finishing materials, specifications, shades, sizes and colour of the tiles, etc. shown in the image are only indicative in nature and are only for the purpose of illustrating/indicating a conceived layout and do not form part of the standard specifications/amenities/services to be provided in the unit and/or the Project. The specifications/amenities mentioned in the Agreement for sale and/or uploaded on RERA website shall be final and binding on the Developer and Purchaser.



# Master Layout Plan

## Ground Floor



### Ground Floor

1. Main Entrance/Exit
2. Signage Wall
3. Pedestrian Entry
4. Security Cabin
5. Driveway
6. Senior Citizen Plaza
7. Parking
8. Drop Off Lobby
9. Indoor Play Court
10. Stepped Seating Area
11. Games Viewing Deck
12. Kid's Play Area
13. Green Lawn Area
14. Lounge Seating
15. Badminton Court
16. Foosball
17. Snooker Table
18. Table Tennis
19. Gaming Zone
20. Chess Room
21. Carrom Room
22. Cards Room
23. Multipurpose Hall
24. Squash Court



# Master Layout Plan Sky Zone & E-Deck



## E-Deck

- 25. Adult Swimming Pool
- 26. Kid's Swimming Pool
- 27. Pool Deck
- 28. Viewing Pavillions
- 29. Changing Rooms
- 30. Spa
- 31. Tree Court
- 32. Glass House Cafe
- 33. Recreational Lawn
- 34. Paved Pathway
- 35. Yoga Deck
- 36. Sky Gym
- 37. Leisure Lawn
- 38. Gazebo
- 39. Toddler Play Zone
- 40. Library
- 41. Reading Nooks
- 42. Space for Creche
- 43. Gym
- 44. Party Lawn

## Sky Zone

- 45. Star Gazing Deck
- 46. Reflexology Pathway
- 47. Healing Accupressure Pathway
- 48. Sky Yoga
- 49. Tree Court
- 50. Sky Lawn
- 51. Barbeque Area
- 52. Sky Lounge





*Godrej* | PROPERTIES



The project is registered as "Godrej Bayview" under MahaRERA No. P51700031726 available at <http://maharera.mahaonline.gov.in>. The project is being developed by Suncity Infrastructures (Mumbai) LLP which is an affiliate of Godrej Properties Ltd The Sale is subject to terms of Application Form and Agreement for Sale. All specifications of the unit shall be as per the Agreement for Sale. Customers are advised to apprise themselves of the necessary and relevant information of the project prior to making any purchase decisions. The official website of Godrej Properties Limited is [www.godrejproperties.com](http://www.godrejproperties.com). Please do not rely on the information provided on any other website. Artist's impression. For representation purpose only. No warranty is expressly or impliedly given that the completed development will comply in any degree with such artist's impression as depicted. Artist's impression for representation purpose only.