



www.kamdhenu-crown.com/

Call: +91 2246181024

A REALM OF REFINEMENT,
Reserved only for you.



K A M D H E N U
C R O W N



Site Address: Plot No. 6 & 7, Sector19, Palm Beach Road, Sanpada, Navi Mumbai - 400 705

This project is registered under MahaRERA Registration No. P51700077573 and is available on the website maharera.mahaonline.gov.in

Disclaimer: We are offering unfurnished apartments not including add-ons such as furniture and fixtures, unless specifically incorporated in the agreement of sale. The purpose of this brochure is to indicate to the customers, the range of the amenities and facilities that come up in the project as per the present approved layout. All amenities, facilities, plans, layouts, locations, specifications and services mentioned are indicative of the kind of development proposed and its finally subjected to approval of the respective authorities or as required by the promoters/developers in the interest of continuing improvement, without prior notice or obligation. Tolerance of +/- 3% is possible in the unit areas on account of design and construction variances. All these dimensions are unfinished structural dimensions



WELCOME TO BILLIONAIRES' ROW,

Palm Beach.

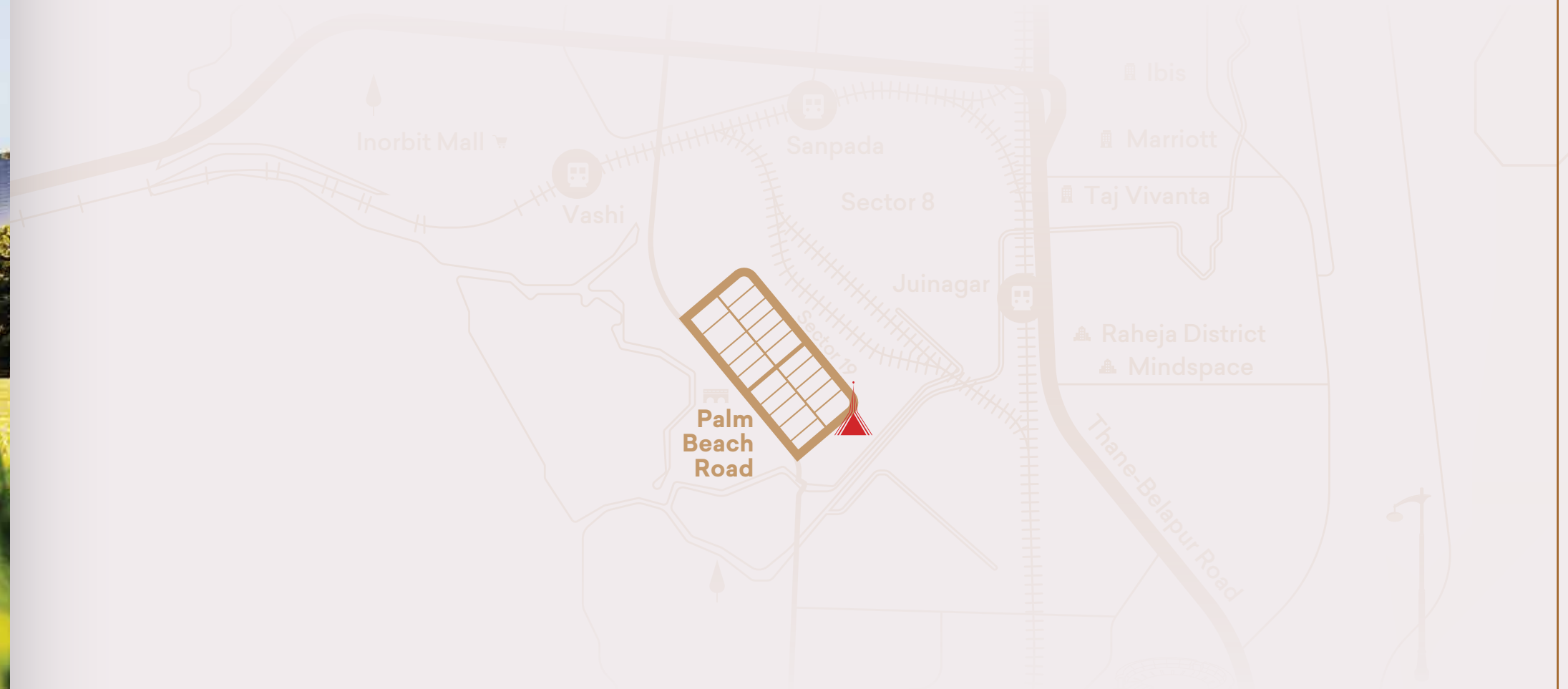
THE EPITOME OF PRESTIGE.

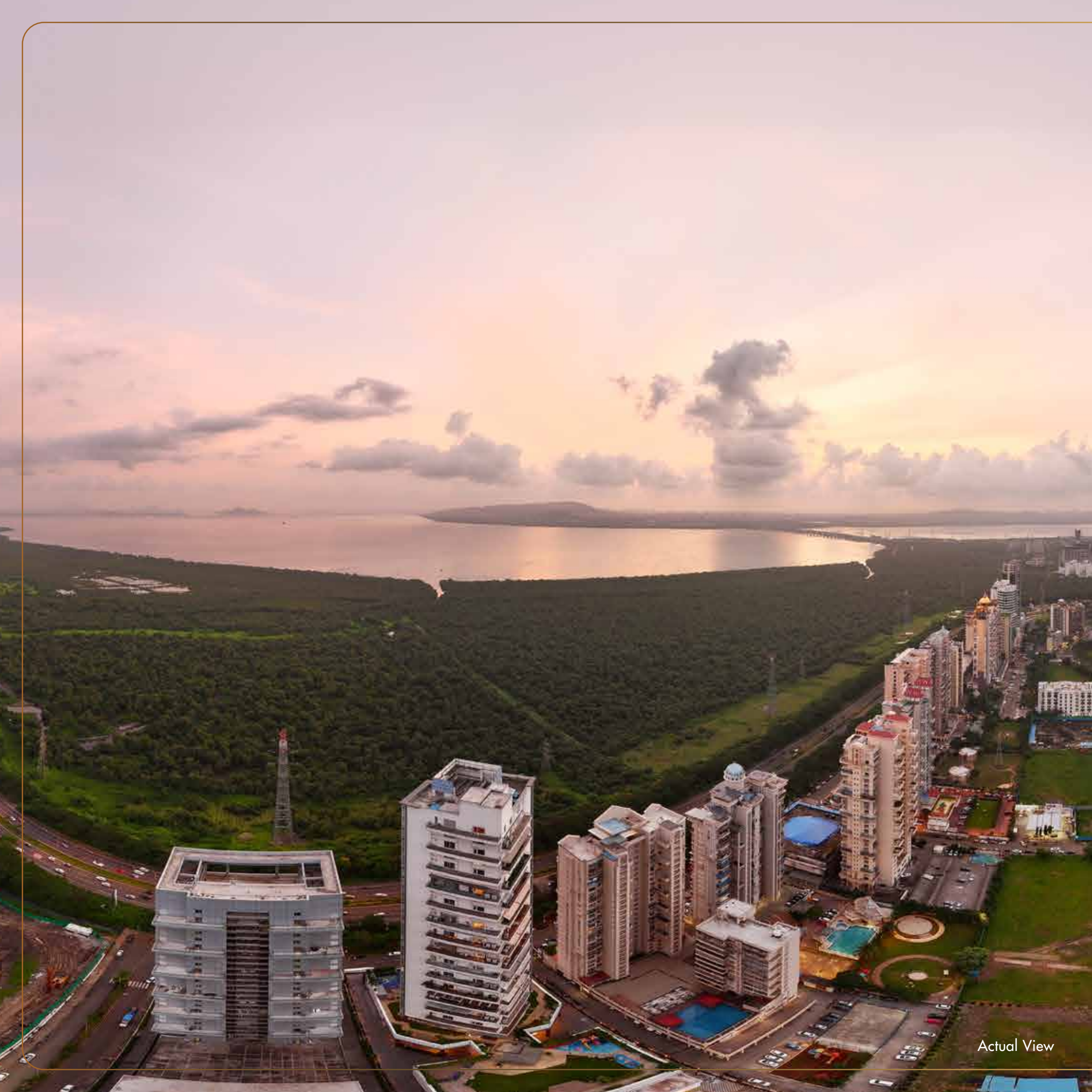


Representative Image

Tucked away on Palm Beach Road, Billionaires' Row is where luxury meets tranquillity. Recognised as Navi Mumbai's most elite neighborhood, Palm Beach is home to the highest number of ultra-wealthy residents, embodying the essence of refined living. With serene waterfront vistas, stunningly designed homes, and lush landscapes, this exclusive enclave truly redefines the word 'opulence'.

To be sure, it isn't about the views alone. Out here, you're virtually moments away from vibrant cultural spots, gourmet dining options and haute couture. Here, elegance flows seamlessly with serenity, crafting a haven for those who desire life's finest moments in Navi Mumbai's most coveted corner. Yes, you can well say, welcome to the good life.





Actual View

LUXURY LIVING

A testament to elite living with stunning waterfront and hill views.

RESIDENCES

Meticulously designed homes set amidst lush greenery.

UPSCALE NEIGHBOURHOOD

Known for its exclusive community and serene environment.

CULTURAL ACCESS

Close to vibrant cultural hubs, premier dining, and shopping options.

REFINED LIFESTYLE

A coveted destination for those seeking sophistication in Navi Mumbai's prestigious addresses.



YOUR GATEWAY TO EVERY DESTINATION IN

Navi Mumbai.

Be a part of the bustling heart of Navi Mumbai, where luxury and convenience converge. At the Billionaires' Row, you'll have effortless access to top-tier infrastructure and the city's finest lifestyle and educational destinations. It's not merely a home; it's an exquisite lifestyle that redefines your everyday.

<5

MINS

Palm Beach Road

Sanpada Railway Station

Ryan International School

New Millennium Hospital

MPCT Hospital

D-Mart

<10

MINS

Taj Vivanta

Inorbit Mall

Seawoods Grand Central Mall

JW Marriott

Four Points by Sheraton

Vashi Railway Station

Hiranandani Hospital

Mindspace

<25

MINS

Upcoming
Navi Mumbai International Airport

Podar International School

Delhi Public School

D Y Patil Medical College

D Y Patil Stadium

Upcoming Jetty

Wonders Park

Jewel of Navi Mumbai

MIDC



PRE - LAUNCHING

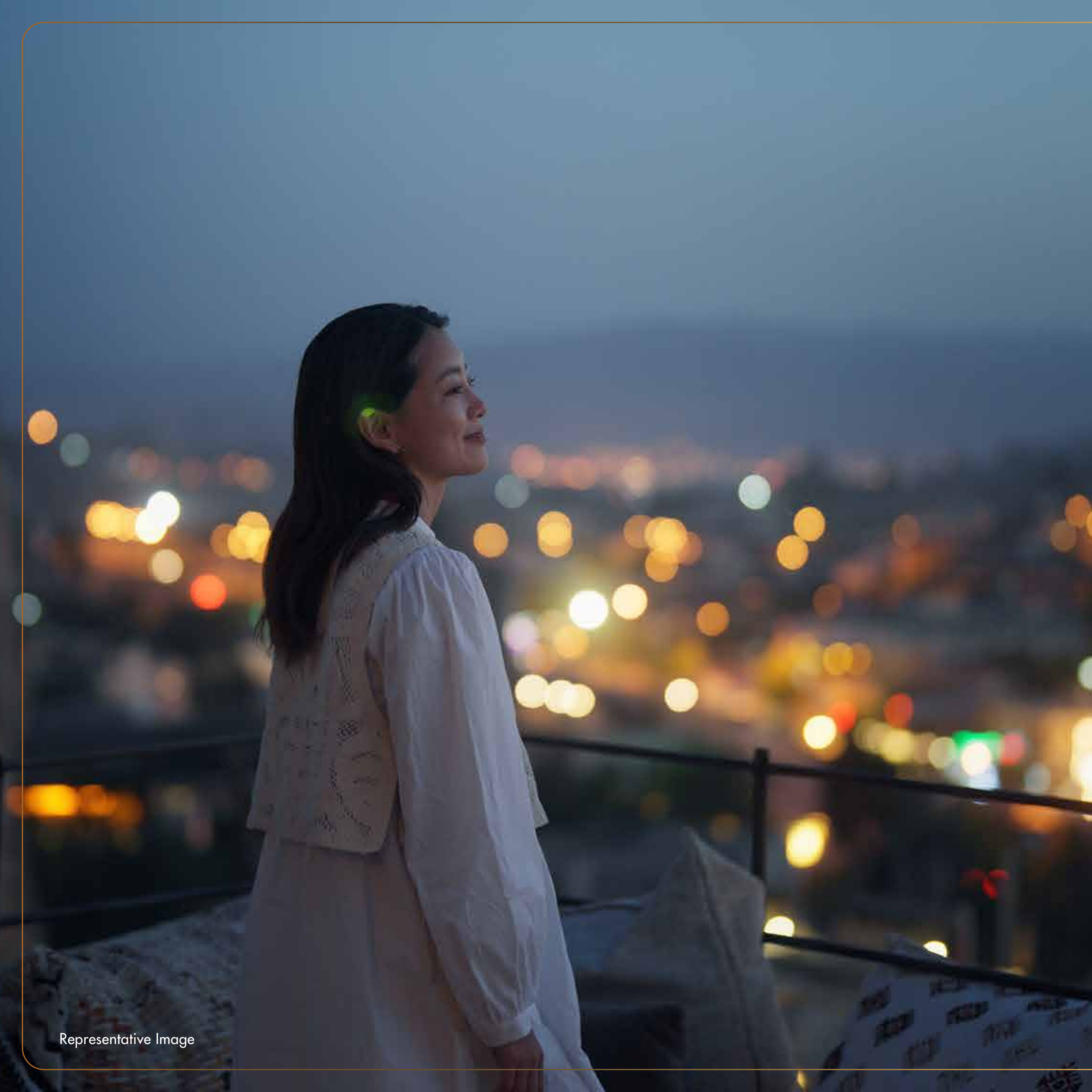


KAMDHENU CROWN

DESIGNED FOR A LIFE
BEYOND THE ORDINARY.



Artist's impression

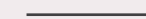


Representative Image



TAILORED FOR THE DISCERNING TASTE
of Connoisseurs.

Immerse yourself in a world of luxury that perfectly harmonises with nature. Against the backdrop of verdant hills and enchanting waters, this enclave welcomes a distinguished circle—individuals with an eye for elegance, an appreciation for exclusivity, and a shared reverence for sophistication. In the company of true connoisseurs, life's finest pleasures are more than enjoyed; they're elevated.





FOR THOSE WHO SEEK DISTINCTION
in Every Detail.

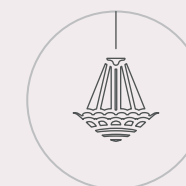


Artist's impression

Introducing Kamdhenu Crown, an ultra-luxe boutique tower that embodies grandeur and artistry. Every residence here is adorned with exquisite finishes and bespoke amenities for those who appreciate the finer things in life. Wrapped in verdant views and a hush of calm, this is your private retreat in the clouds. So, come, experience the essence of elevated living.



33 storey ultra-luxury tower



**Air-conditioned ground-floor entrance lobby
with designer finishes**



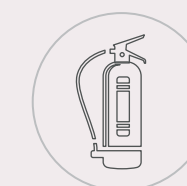
**Designer finishes for the lobby and
common area**



**3 elevators from an internationally
renowned brand**



Separate service/fire elevator



Top-tier firefighting system



EVERYDAY ESCAPES, *Elevated.*

Picture a life where your fitness routine feels indulgent, your spa retreat is a sanctuary of calm, and the terrace view transforms each sunset into a timeless experience. At Kamdhenu Crown, luxury isn't a rare occasion; it's woven into every day.

YOUR ALL-ACCESS PASS TO

Pure Leisure.

- | | | | |
|------------------------|------------------|-------------------|-----------------------|
| 1. Party Lawn | 6. Jogging Track | 11. Kids' Pool | 16. Indoor Play Area |
| 2. Kids' Play Area | 7. Stage | 12. Lap Pool | 17. Multipurpose Room |
| 3. Multi-purpose Court | 8. Amphitheatre | 13. Viewing Deck | 18. Gymnasium |
| 4. Cabana | 9. Event Lawn | 14. Crèche | 19. Spa Bed |
| 5. Lawn | 10. Pool Deck | 15. Driver's Room | 20. Steam Room |
| | | | 21. Changing Room |

MASTER PLAN PODIUM LAYOUT



DIVE DEEP INTO *Boundless Bliss.*



PRECISION FITNESS FOR AN
Exquisite Lifestyle.

Representative Image



WHERE RELAXATION *Finds its Rhythm.*

Representative Image



A Grand Symphony

OF SPACE, STYLE AND SOPHISTICATION:

LIFE AT KAMDHENU CROWN.

Discover spacious 2, 3, and 5-bedroom homes, complete with expansive decks that seamlessly blend indoor elegance with sweeping hill views. These residences are designed with a precision to balance luxury, comfort, and efficiency. Enjoy abundant layouts, premium finishes, and thoughtful touches that elevate your lifestyle. This is where exceptional living becomes your everyday reality.



Representative Image

Bespoke Residences

YOU CAN STYLE TO YOUR PERSONAL TASTE.



Representative Image



Representative Image



Crafting timeless spaces

SINCE THE '50'S.

Founded in 1955 by the visionary Late Mr. Anantram Sabhlok, Kamdhenu has set the standard for excellence in construction. Under the leadership of Mr. Surinder Sabhlok and Mr. Karan Sabhlok, we have built a legacy of delivering exceptional residential and commercial spaces. Every project we undertake is crafted with care, precision, and a commitment to quality.

Our passion for innovation drives us to take on new challenges that push boundaries, while our dedication to sustainability and social responsibility remains at the core of our work. At Kamdhenu, we promise superior quality, timely delivery, and a future where every building contributes to better lifestyles and vibrant communities. At Kamdhenu, we don't just build structures; we craft legacies that stand the test of time.



Kamdhenu Oaklands



Kamdhenu Vogue



Kamdhenu Grandeur



Kamdhenu Zenith



Kamdhenu Aura

Representative Image



Representative Image

LEGACY BUILT ON DELIVERY

We have a proud history of completing 1.95 million sq. ft. projects ahead of schedule and bringing innovative practices to Navi Mumbai.

CUSTOMER-CENTRIC EXCELLENCE

Our customer-first approach distinguishes us as an industry leader. We consistently exceed expectations with unwavering dedication to top-tier quality.

FOUR DECADES OF PIONEERING NEXT-GEN TECH

As trailblazers in next-gen construction technology, we proudly lead Navi Mumbai's development. Our innovative methods set new industry benchmarks and transform the city's infrastructure.



Our journey mirrors the city's growth, defining both residential and commercial landscapes. From the beginning, we've led the transformation and set new benchmarks.